

AERATION SYSTEM



- › Maintaining the quality of the stored crop is a vital consideration in the design of any storage facility, **AGI EMEA** offers an extensive range of highly efficient backward curved centrifugal fan units, providing exceptional performance, together with a wide range of aeration systems designed specifically to suit the **AGI EMEA** range of FP, FH & FC storage silos.
- › The standard **AGI EMEA** fan selection is based on an air volume of 7m³/h/tonn of product stored.
- › Available in both fixed & mobile versions, the VFIS and VCAR fans are supplied with hot dipped galvanized mild steel casings, dynamically balanced steel impeller, direct coupled TEFC IP55 motors, inlet & outlet guards.
- › Our fixed fans are supplied with a Ø 405mm diameter and 1 m long flexible ducting made of one silicone coated both sides with glass fabric, clamping band & outlet transition, & anti-vibration pads.
- › The **AGI EMEA** range of mobile fans units is available up to 18.5 KW & are supplied mounted on wheels & equipped with handgrips for easy handling. In addition, the fans are supplied with a mounted starter & 10m of electric cable with plug.
- › Detailed fan curves & noise levels are available upon request.

Fixed Fans "VFIS"



Mobile Fans "VCAR"



FAN PERFORMANCE

ELECTRICAL FANS PERFORMANCES - MODEL VFIS

"Capacity tolerance ±5% Noise level tolerance +3 dB(A)"				Air capacity (m ³ /h)																											
Fan type	g/1' rpm	kW inst.	dB(A) 1,5 mt	2400	2700	3000	3360	3780	4260	4800	5400	6000	6720	7500	8400	9600	10800	12000	13500	15000	16800	18900	21300	27000	30000	33600	37800				
				Total pressure (mm H ₂ O)																											
VFIS02ZZ	2850	2,2	77	165	162	159	150	140	125	106	82	-	-	-	-	-	-	-	-	-	-	-	-	-	-	-	-	-			
VFIS030Z	2900	3	78	-	190	188	185	179	170	162	152	140	125	100	-	-	-	-	-	-	-	-	-	-	-	-	-	-			
VFIS040Z	2900	4	79	-	-	-	210	210	208	205	200	190	175	160	140	90	-	-	-	-	-	-	-	-	-	-	-	-			
VFIS06SZ	2900	5,5	82	-	-	-	-	230	230	225	220	215	200	185	165	140	110	70	-	-	-	-	-	-	-	-	-	-			
VFIS07SZ	2900	7,5	84	-	-	-	-	-	-	270	270	268	262	255	248	235	210	180	-	-	-	-	-	-	-	-	-	-			
VFIS10Z	2930	11	85	-	-	-	-	-	-	-	300	298	292	282	275	260	238	215	190	158	100	-	-	-	-	-	-	-			
VFIS16Z	2935	15	88	-	-	-	-	-	-	-	-	-	350	348	342	335	325	305	290	260	225	150	-	-	-	-	-				
VFIS18SZ	2935	18,5	89	-	-	-	-	-	-	-	-	-	-	380	377	368	360	347	335	310	280	250	205	-	-	-	-				
VFIS160P4Z	1460	15	79	-	-	-	-	-	-	-	-	-	-	-	-	-	180	180	177	172	165	160	145	115	97	65	-				
VFIS185P4Z	1470	18,5	82	-	-	-	-	-	-	-	-	-	-	-	-	-	-	-	215	215	214	210	205	192	170	150	90				
VFIS220P4Z	1470	22	83	-	-	-	-	-	-	-	-	-	-	-	-	-	-	-	-	-	235	230	228	220	200	185	170	145			
VFIS300P4Z	1470	30	85	-	-	-	-	-	-	-	-	-	-	-	-	-	-	-	-	-	-	-	250	250	242	232	220	205			

AGI EMEA S.R.L.

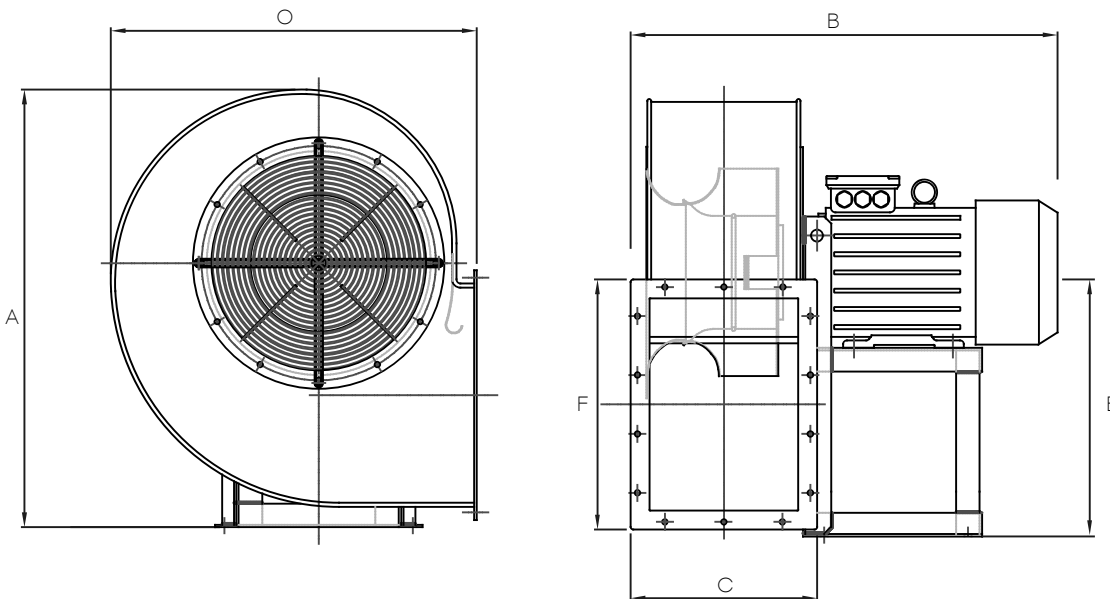
Via Bertella 2 - 40064 Ozzano dell'Emilia (BO) – Italy

P +39 051 798 107 | F +39 051 796 300 | E info@framespa.it | framespa.com | aggrowth.com

AERATION SYSTEM



BASIC DIMENSIONS



Fan Model	A	B	C x F	O	E
VFIS022Z	740	575	250x355	620	450
FVIS030Z	740	640	250x355	620	450
VFI040Z	830	670	280x400	695	500
VFIS055Z	830	730	280x400	695	500
VFIS110Z	930	905	315x450	780	560
VFIS150Z	1040	945	355x500	850	630
VFSI185Z	1040	945	355x500	850	630
VFIS150P4Z	1490	1100	500x710	1200	900
VFIS220P4Z	1643	1270	500x800	1338	1000
VFIS185P4Z	1643	1240	560x800	1338	1000
VFIS0300P4Z	1775	1350	630x900	1485	1060

All dimensions are in mm
Fully detailed planning in drawing available on request.

AGI EMEA S.R.L.

Via Bertella 2 - 40064 Ozzano dell'Emilia (BO) - Italy

P +39 051 798 107 | F +39 051 796 300 | E info@framespa.it | framespa.com | aggrowth.com

THE AGI EMEA RANGE OF ROOF VENTS / FANS

In addition to the correct fan selection, careful consideration should be given to the selection of the appropriate roof vents to suit Flat Bottom & Hopper Silos. AGI EMEA offer a wide range, including powered roof fans.

The simplest version is the Low Profile roof fans, mainly intended for smaller silos, however, for most applications, the Curved roof vent is offered. In addition, AGI EMEA can supply 'powered roof vents as shown below.

— Standard Goose neck roof vent — Powered Goose neck Roof Vent — Powered roof Fan — Horizontal Powered roof fan.



All AGI EMEA roof fans are supplied to fit over a Goose neck shaped opening of a clear area of 0,24 m², which incorporate a pre-formed lip with a special gasket to provide a weather type seal.

POWERED ROOF FANS AND POWERED ROOF VENT PERFORMANCE

Model ref.	kW	Volume/pressure
AERAP-XM (ATEX 22) - ROOF VENT	0.18 kW	2,200m ³ /h @ 4mm swg
TORFOROX015G - POWERED ROOF FAN	1.5 kW	7,600 m ³ /h @ 5mm swg
AERAP-XL - HORIZONTAL POWERED ROOF FAN (ATEX 22)	1.5 kW	8,500 m ³ /h @ 15mm swg

AGI EMEA OFFERS A WIDE RANGE OF DESIGNS OF AERATION SYSTEMS TO SUIT THE FLAT BOTTOM AND HOPPER SILOS.

FLAT BOTTOM SILOS LEVEL FLOOR AERATION GRIDS

Cast into pre-formed channels within the silo base & incorporating a series of galvanised modular grids arranged in an 'H' pattern, designed to suit the specific diameter of the silo. Thus, providing very effective air distribution, the 500mm wide louvered grids can be offered to suit wheat, corn, rape seed, rice as well as other cereals. Self-supporting, with no additional supports or fixings required, the grids are simple to install & easily removed for cleaning. Optional pre-formed steel troughs to cast into the silo base are available at additional cost.



FLAT BOTTOM SILO 'FULL FLOOR' AERATION SYSTEM

Providing an alternative to the grid system, the galvanised steel full floor aeration system provides 100% coverage of the silo base area & utilises louvered channels mounted on 300mm high steel supports & is easily assembled on site. The louvered channels can be offered to suit paddy rice as well as wheat, maize & rapeseed.



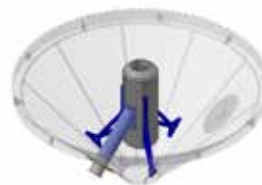
AGI EMEA S.R.L.

Via Bertella 2 - 40064 Ozzano dell'Emilia (BO) – Italy

P +39 051 798 107 | **F** +39 051 796 300 | **E** info@framespa.it | **framespa.com** | **aggrowth.com**

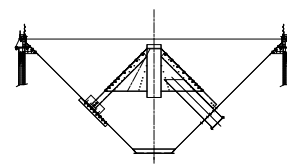
HOPPER SILO AERATION ROCKET

The new ROCKET aeration system has been designed to reduce drying time and optimize its efficiency. To be more weight and cost effective. Suitable for FC/FH silos from model 04 to 06- Ring<13.



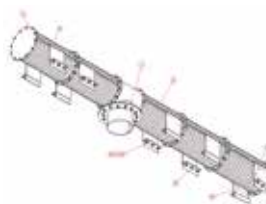
HOPPER SILO AERATION CONE

The inverted louvered cone provides efficient air distribution, supplied with a 400mm diameter air inlet facility within the hopper segment. Suitable for FC/FH silos from model 04 to 06- Ring>13 and from 07 to 08 for all rings.



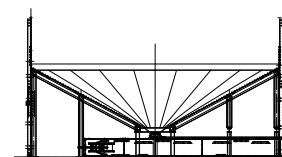
HOPPER SILO AERATION DUCTS

For larger diameter Hopper silos, AGI FRAME have developed a range of aeration systems based on multiple corrugated perforated tubular ducts supplied with the necessary fixing clamps & air inlet facilities to be installed within the hopper suitable for silos up to model FP 09.



FLAT BOTTOM SILO CONICAL AERATION SYSTEM

This ventilated conical base is installed within the Silo with a 28-degree angle; two versions are available, floor & above level outlet. Vertical support channels & an internal flashing seal are supplied as standard.



Note: AGI FRAME reserves the right to change specification without prior notice.

AGI EMEA S.R.L.

Via Bertella 2 - 40064 Ozzano dell'Emilia (BO) - Italy

P +39 051 798 107 | **F** +39 051 796 300 | **E** info@framespa.it | **framespa.com** | **aggrowth.com**

