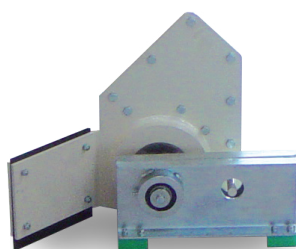
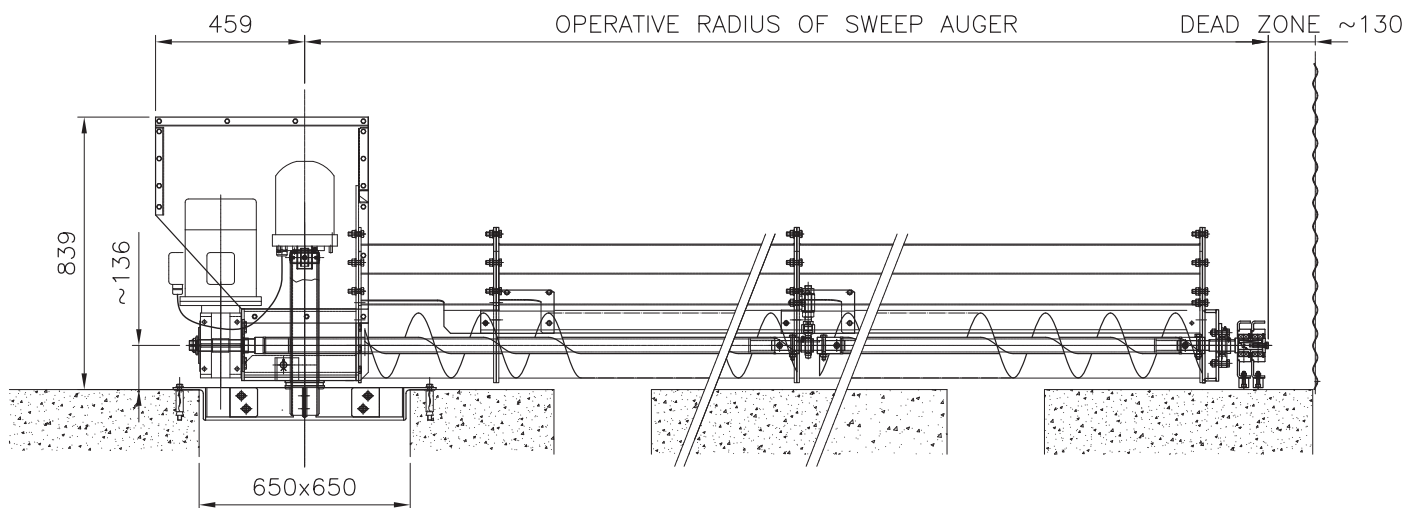




- › The **AGI FRAME CSTF** range of sweep augers is manufactured to suit a wide range of **AGI FRAME FP** silo diameters & is designed to be permanently installed in the silo & can be used with free flowing granular materials. Three reclaim capacities are available; the direct coupled gear motor drive can be mounted either in the silo or, at additional cost, in the gallery under the silo
- › The drive assembly is mounted on a heavy painted central support frame
- › **ATEX** specifications are available at additional cost

TECHNICAL DATA	CSTF
CAPACITY (BASED ON DRIED CEREAL 780 KG/m <sup>3</sup> . ACCORDING TO RPM)	50
FLIGHT DIAMETER	200 mm
FLIGHT THICKNESS	2 mm
SWEEP AUGER PROGRESSION	WALKING PLATES WITH UHMWP FEET
CENTRE TUBE DIAMETER	60,3 mm
CENTRE TUBE WALL THICKNESS	2,9 mm
APEX COVER	130X130X3 mm SQUARE TUBE - PAINTED
APEX COVER CONNECTION	BOLTED FLANGE
FLOW REGULATION ADJUSTABLE FLAPS	2 mm - GALVANIZED
SCREW ROTATION SPEED	300 RPM



**FRAME S.R.L.**

Via Bertella 2 - 40064 Ozzano dell'Emilia (BO) - Italy

**P** +39 051 798 107 | **F** +39 051 796 300 | **E** info@framespa.it | **framespa.com** | **aggrowth.com**