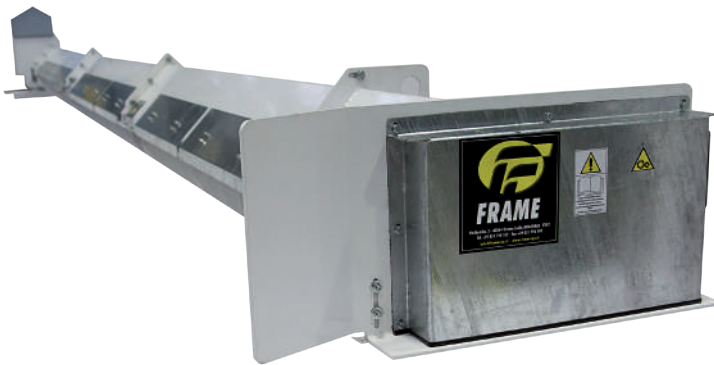


# FRAME TECHNICAL DATASHEET

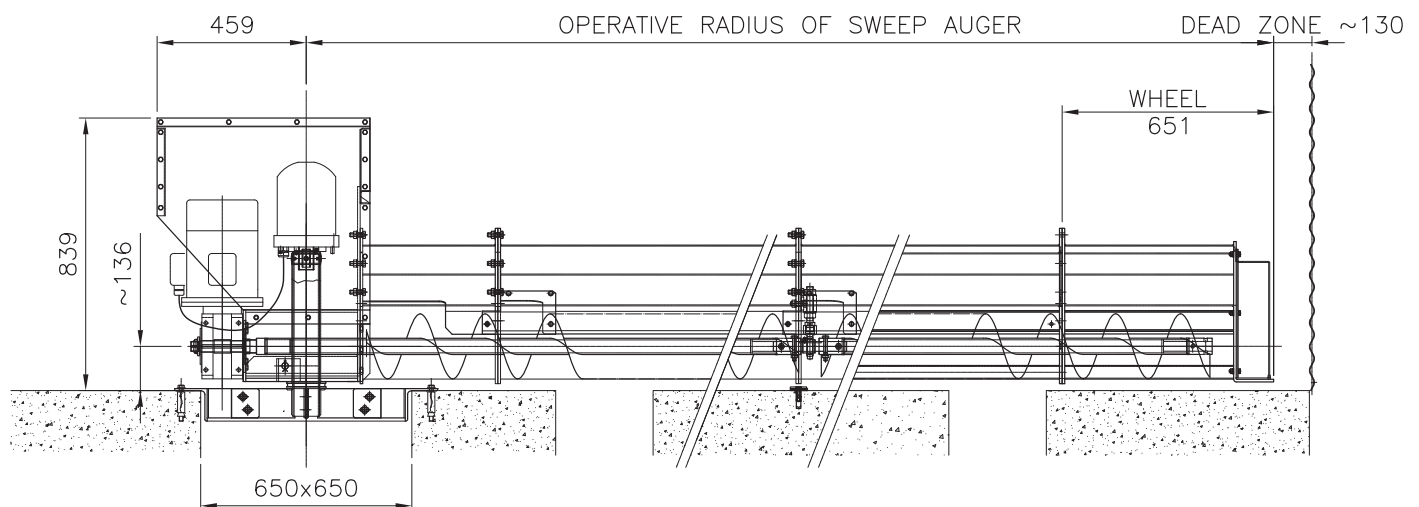
## FSAXX100 SWEEP AUGERS

**FRAME**  
www.framespa.it



- › The **FRAME FSAXX100** sweep auger is manufactured to suit a wide range of **FRAME FP** silo diameters & is designed to be permanently installed in the silo & can be used with free flowing granular materials. The direct coupled gear motor drive can be mounted either in the silo or, at additional cost, in the gallery under the silo
- › The drive assembly is mounted on a heavy painted central support frame
- › **ATEX** specifications are available at additional cost

TECHNICAL DATA	FSAXX100
CAPACITY (BASED ON DRIED CEREAL 780 KG/m <sup>3</sup> . ACCORDING TO RPM)	100
FLIGHT DIAMETER	230 mm
FLIGHT THICKNESS	3 mm
SWEEP AUGER PROGRESSION	3 Rubber Wheels
CENTRE TUBE DIAMETER	60,3 mm
CENTRE TUBE WALL THICKNESS	2,9 mm
APEX COVER	150x150x3 mm SQUARE TUBE
APEX COVER CONNECTION	BOLTED FLANGE
FLOW REGULATION ADJUSTABLE FLAPS	2 mm - GALVANIZED
SCREW ROTATION SPEED	300 RPM



Rif. 57x0009 Rev.0 - FRAME reserves the right to change specification without prior notice.

T +39 051 798 107 | F +39 051 796 300 | info@framespa.it | www.framespa.com

Tecnologia Italiana

All **FRAME** products are CE marked

**FRAME Srl**  
Via Bertella, 2  
40064 Ozzano Emilia (BO)  
Italy

**AGI**  
www.agrowth.com