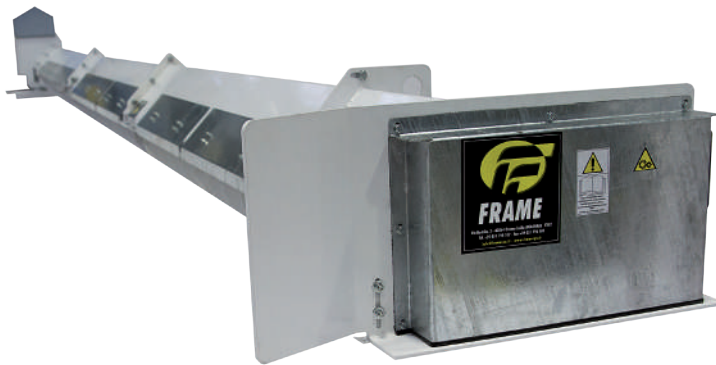


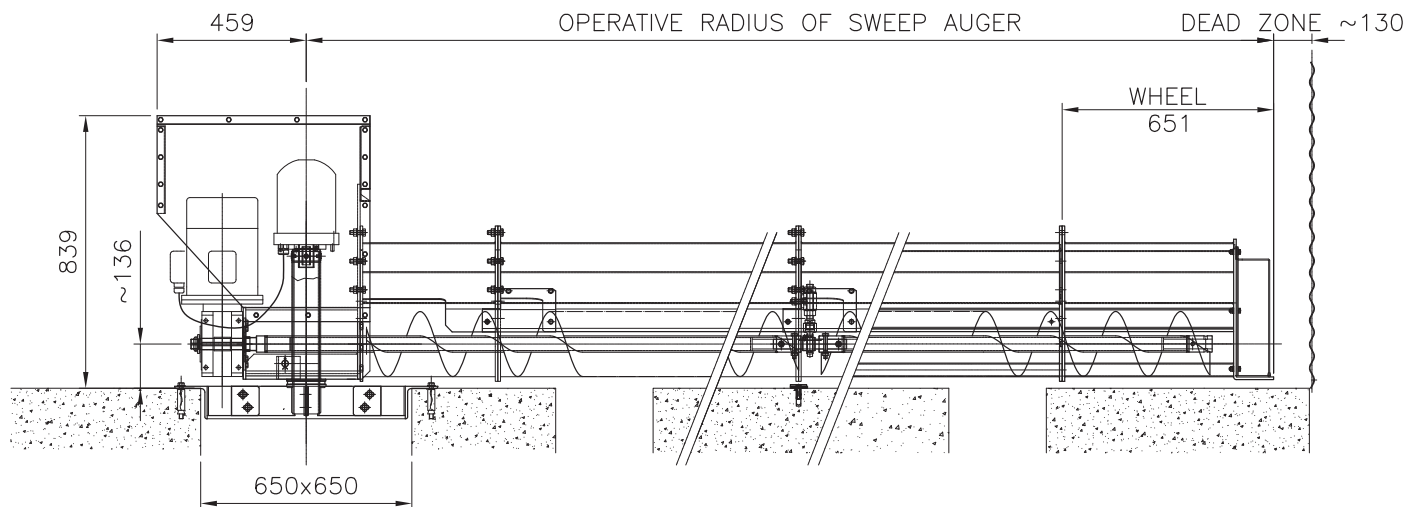
# FRAME TECHNICAL DATASHEET

## CSTFRH SWEEP AUGERS



- › The **FRAME CSTFRH** range of sweep augers is manufactured to suit a wide range of **FRAME FP** silo diameters & is designed to be permanently installed in the silo & can be used with free flowing granular materials. Three reclaim capacities are available; the direct coupled gear motor drive can be mounted either in the silo or, at additional cost, in the gallery under the silo
- › The drive assembly is mounted on a heavy painted central support frame
- › **ATEX** specifications are available at additional cost

TECHNICAL DATA	CSTFRH
CAPACITY (BASED ON DRIED CEREAL 780 KG/m <sup>3</sup> . ACCORDING TO RPM)	50
FLIGHT DIAMETER	200 mm
FLIGHT THICKNESS	6 – HARDENED STEEL mm
SWEEP AUGER PROGRESSION	CAGED WHEEL WITH RUBBER COVERS
CENTRE TUBE DIAMETER	60,3 mm
CENTRE TUBE WALL THICKNESS	7,5 mm
APEX COVER	Ø 130X3 mm TUBE - PAINTED
APEX COVER CONNECTION	BOLTED FLANGE
FLOW REGULATION ADJUSTABLE FLAPS	2 mm - GALVANIZED
SCREW ROTATION SPEED	300 RPM



Rif. 57x0008 Rev.0 - FRAME reserves the right to change specification without prior notice.

T +39 051 798 107 | F +39 051 796 300 | info@framespa.it | www.framespa.com

Tecnologia Italiana

All FRAME products are CE marked

**FRAME Srl**  
Via Bertella, 2  
40064 Ozzano Emilia (BO)  
Italy

**AGI**  
www.agrowth.com